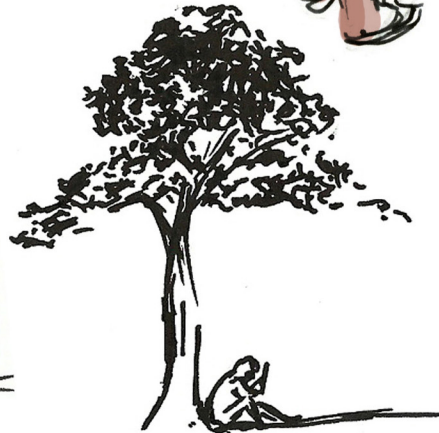
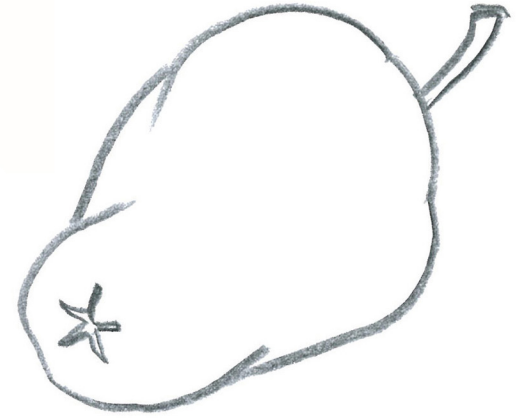




Portfolio Submission



Portfolio Submission Requirements (10 pieces)

4 foundational drawing pages or samples

1 page of hands and feet drawings

2 figure drawing pages or samples (quick studies and gestures)

1 longer study with light and shadow

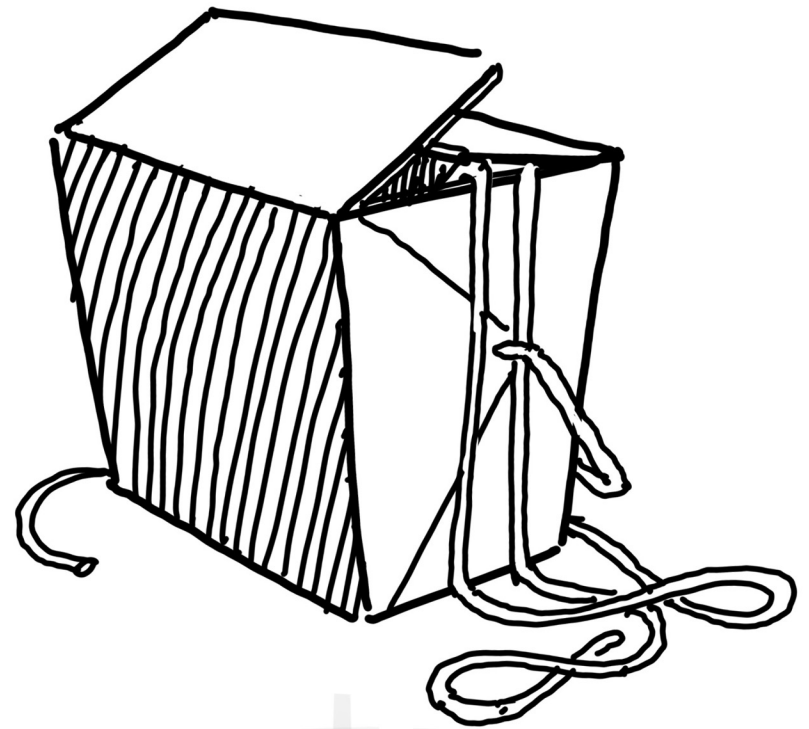
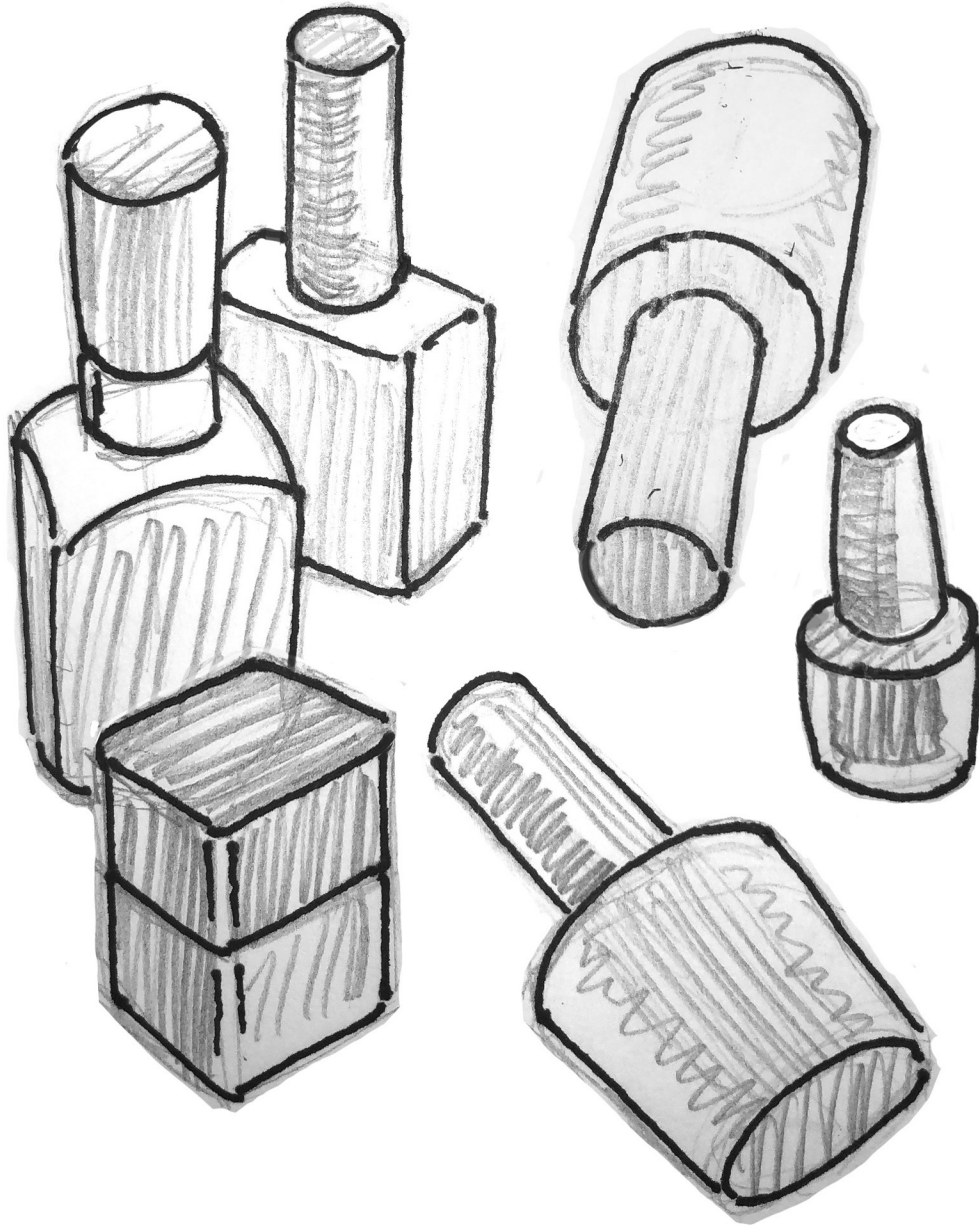
1 pages or sample drawing people on location

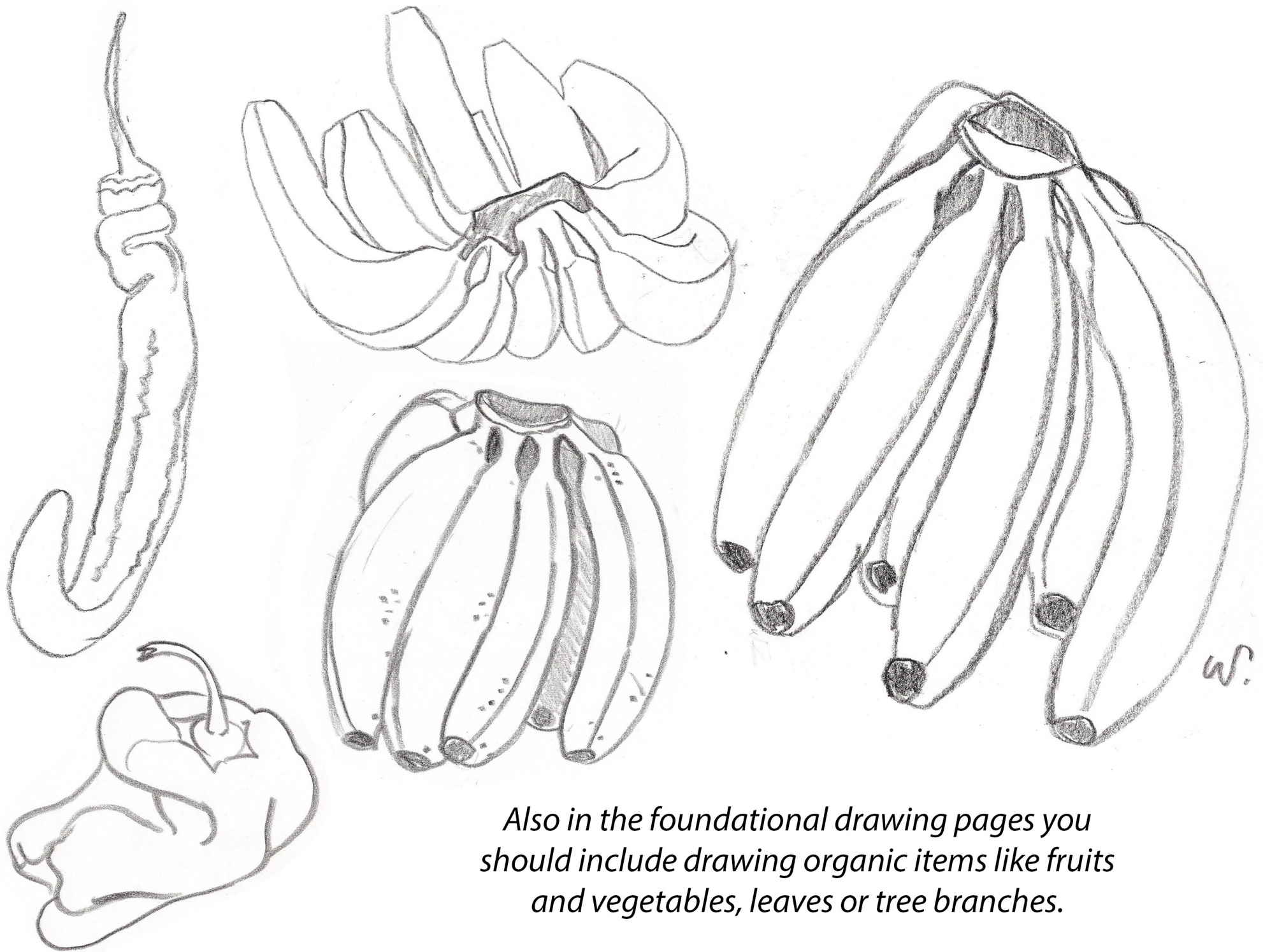
1 self portrait

*All samples must be draw from live observation **NOT** copied from a photo or illustration. The exception would be the self portrait. This can be drawn from photographic reference.*

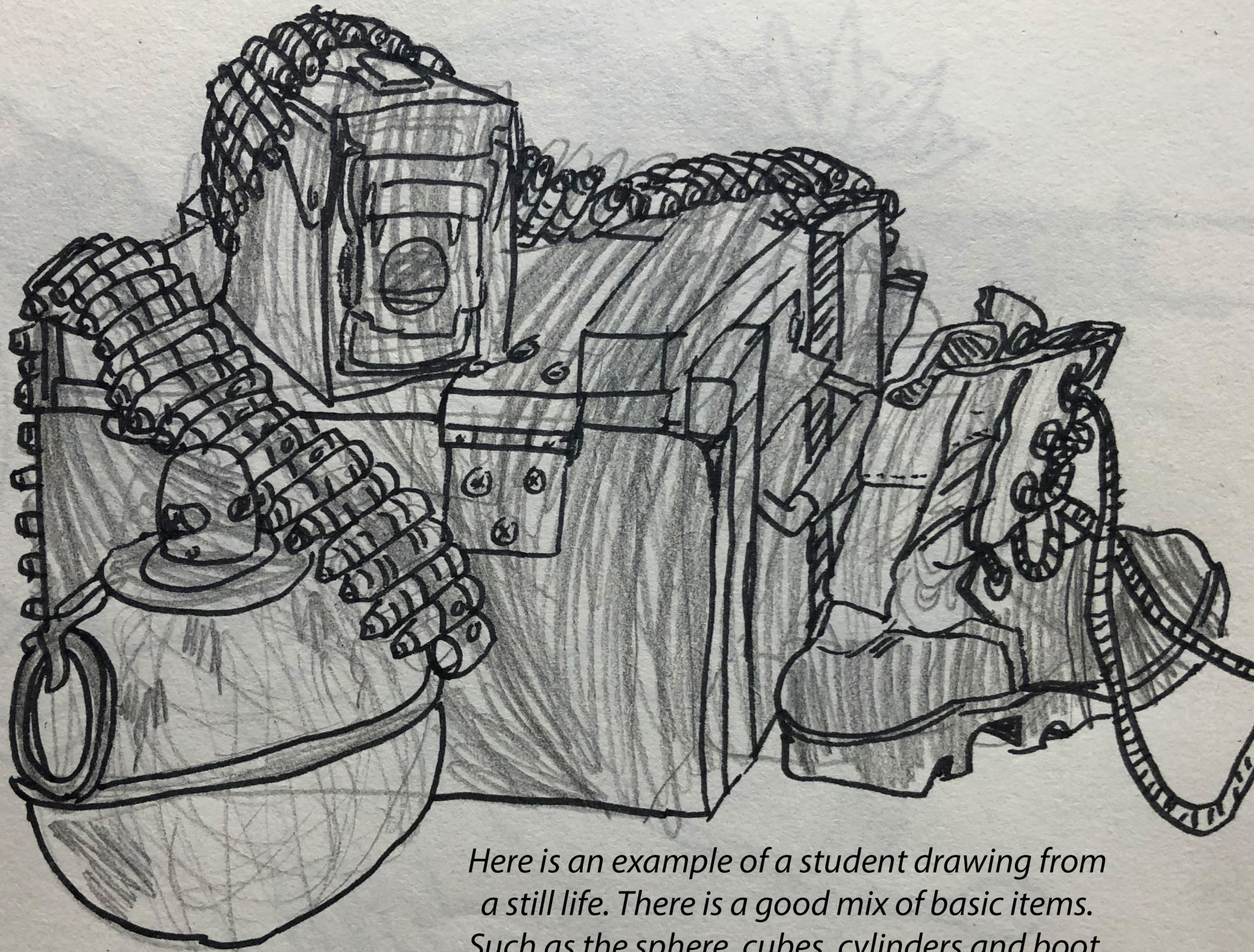
*Mix media can be used in the work. Pen and ink, are recommended to help see the work. **Color** is not necessary or recommended for the work. With exception of the self portrait. Other subjects you can include for the drawing on location page are: vehicles, animals and trees.*

For the basic foundational pages, look no further than around your own home or kitchen cupboards. Draw basic items like plates, bowls, glasses, bottles and boxes.

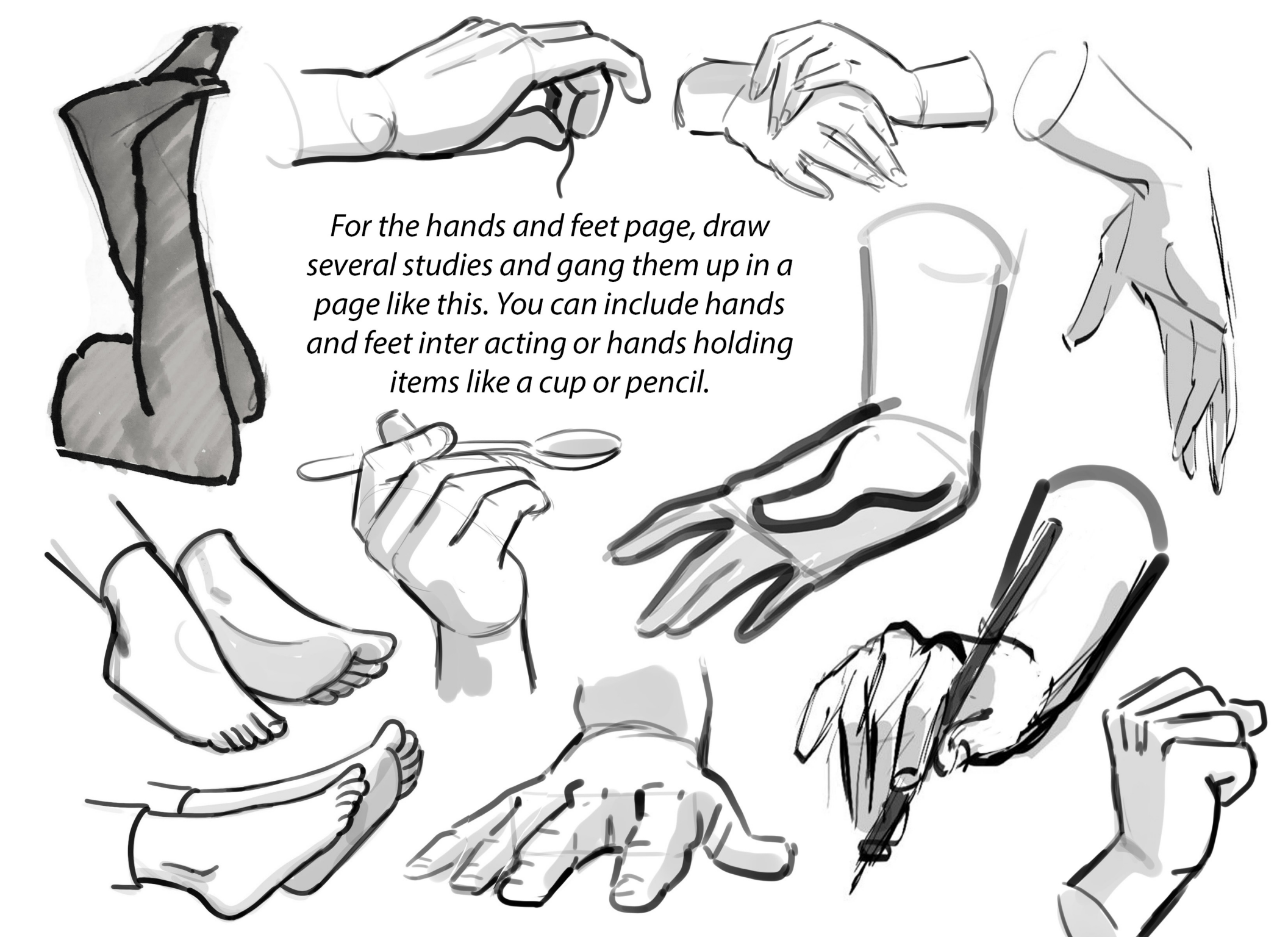




Also in the foundational drawing pages you should include drawing organic items like fruits and vegetables, leaves or tree branches.



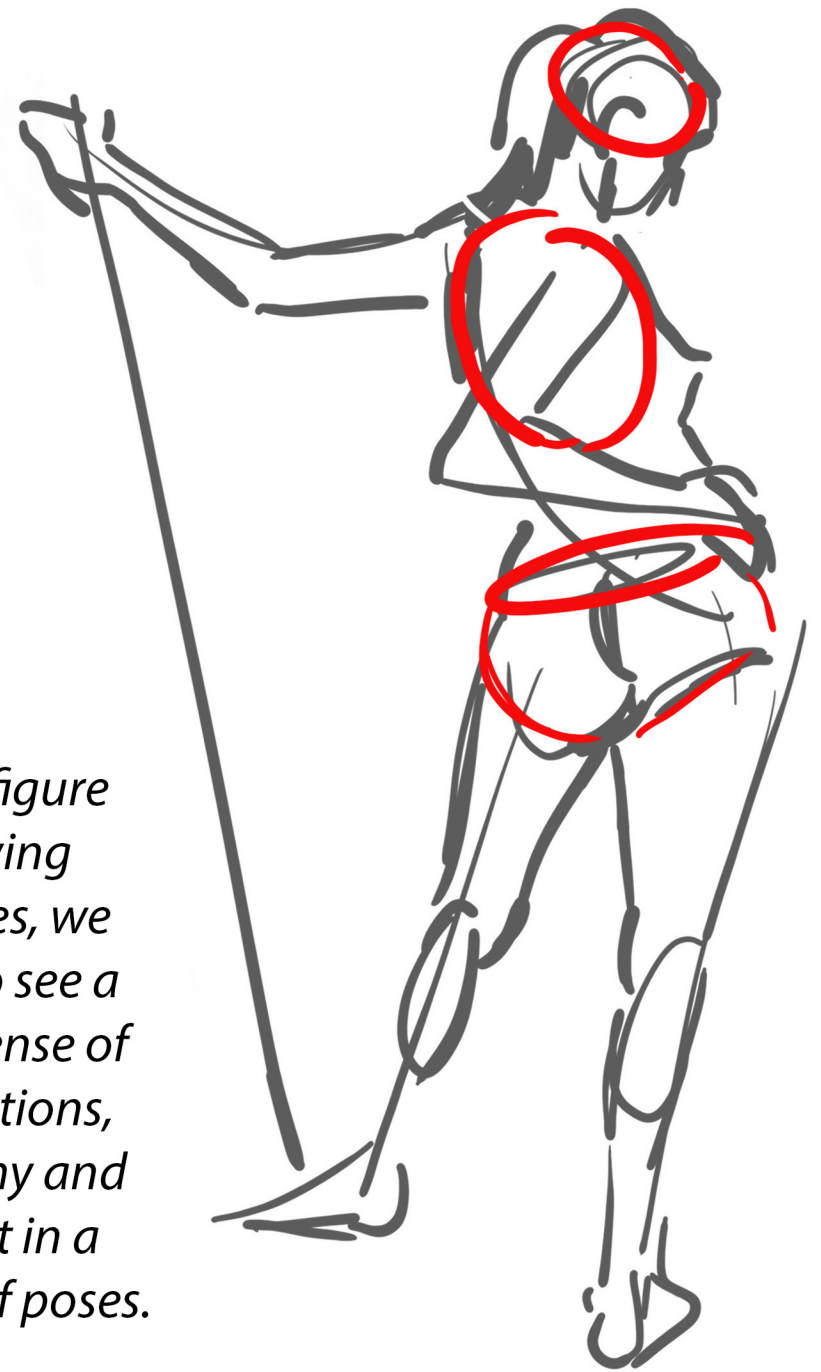
Here is an example of a student drawing from a still life. There is a good mix of basic items. Such as the sphere, cubes, cylinders and boot.

The image is a collage of hand-drawn sketches of hands and feet. At the top left, a foot is shown in profile, wearing a dark sock. To its right, two hands are shown in various poses: one holding a small object, another with fingers spread. In the center, a hand holds a small cup. To the right of the center, a hand is shown holding a long, thin object, possibly a pencil or a brush. At the bottom left, two feet are shown, one in profile and one from a top-down perspective. In the bottom center, a hand is shown with fingers spread. At the bottom right, a hand is shown holding a small object. The sketches are done in a simple, expressive style with bold lines and some shading. The text is centered in the middle of the page, surrounded by the sketches.

For the hands and feet page, draw several studies and gang them up in a page like this. You can include hands and feet inter acting or hands holding items like a cup or pencil.



In the figure drawing samples, we need to see a good sense of proportions, anatomy and weight in a variety of poses.





*In the gesture or quick study page, you can draw or composite several of your best examples on a single page like this. Try to give a variety of poses, standing, sitting or kneeling. Include the entire figure in each pose and you **do not** need color in this page.*

Here are a couple longer studies of the model with light and shadow added to reveal form and anatomy in the figure. You **do not** need to add color for this example.



W!

**Actual
Size**



For the page which includes drawing people on location or in a setting. Go anywhere you find people. At the mall, farmers markets the beach etc. These drawings in your sketch book will be quick studies of people in a natural setting. Which include clothing, hats or props, sitting or standing in groups to include elements of the surroundings.



*quick
studies*



*Here are a few more examples of
drawing people from location.*



For the self portrait page, the student can have some fun. It can be drawn from life looking in a mirror. Or something like this which is a paper collage made from photographic reference.